

Logging into Clever from Home (Student Directions)

Do I need a special browser to log into Clever?

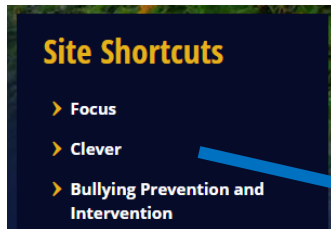
Yes, the best browser to use with Clever is Google's Chrome browser. You can install it on your computer by going to <https://www.google.com/chrome/browser/desktop/index.html>

Once you have Google Chrome, follow the directions below to get to all your digital resources!

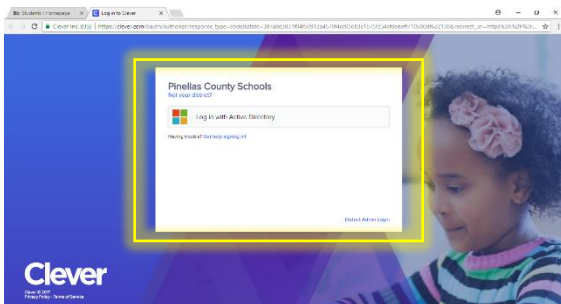
1. Go to <http://www.pcsb.org>

2. Choose the Student tab then

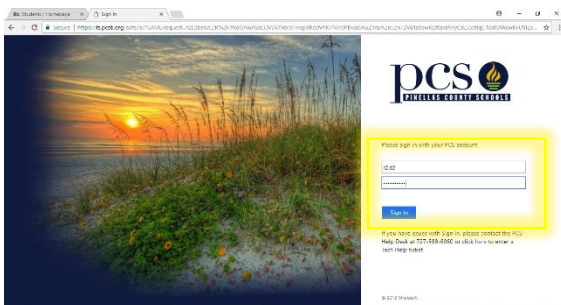
click on the Clever link under Site Shortcuts



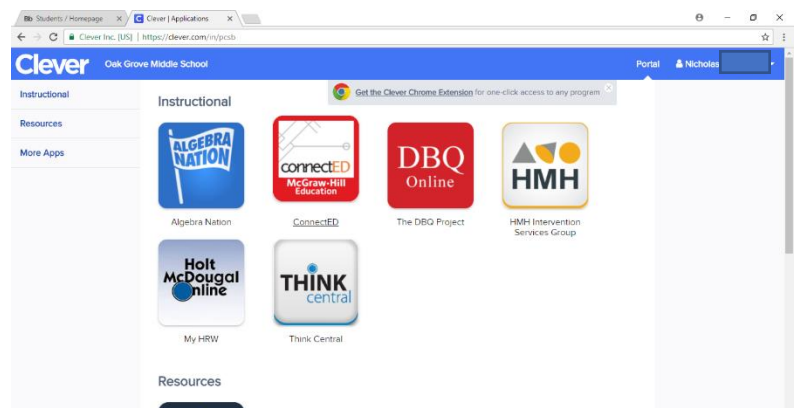
3. On the next page, click on the 'Log In with Active Directory' box



4. It will take you to the log in page where you will enter your PCS username and password.



5. If you get to this page, you have successfully logged into Clever and can now access your materials.



Examples:

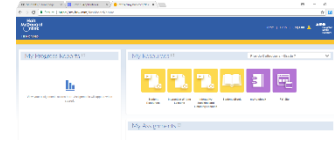
If you click on Think Central it will take you right to this page:



If you click on ConnectED (McGraw-Hill) it will take you right to this page:



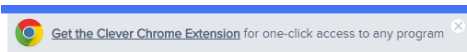
If you click on Holt McDougal Online (My HRW) it will take you right to this page:



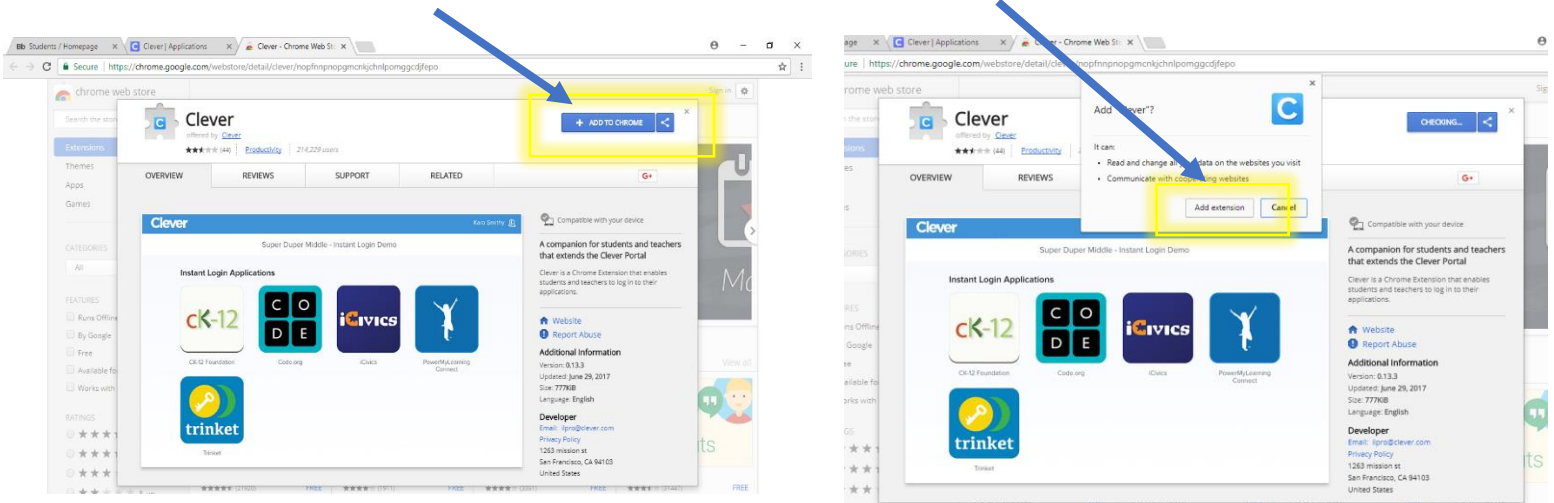
Do you want the system to save your passwords so you don't have to remember them?

Most of the programs you click on won't make you log in again, but there are one or two that might ask you to enter your user name and password the first time you click on them. If you follow the steps below, you can install the Clever Chrome Extension and it will save those passwords for you.

1. Click on the pop-up window that appears in Clever the first time you log in to get the Clever Chrome Extension.



2. Click on the blue + ADD TO CHROME button. When it pops up click the ADD EXTENSION button.



You will know it has been installed when you see a little blue box with a white C in the upper right-hand corner of your Chrome browser.

